

PRODUCT INFORMATION PACKET



Model No: 048A17O172
Catalog No: 048A17O172
Condenser Fan Motor, 0.50 HP, 1 Ph, 60 Hz, 460 V, 1800 RPM, 48Y Frame, OPAO



Regal and Leeson are trademarks of Regal Rexnord Corporation or one of its affiliated companies.
©2024 Regal Rexnord Corporation, All Rights Reserved. MC017097E





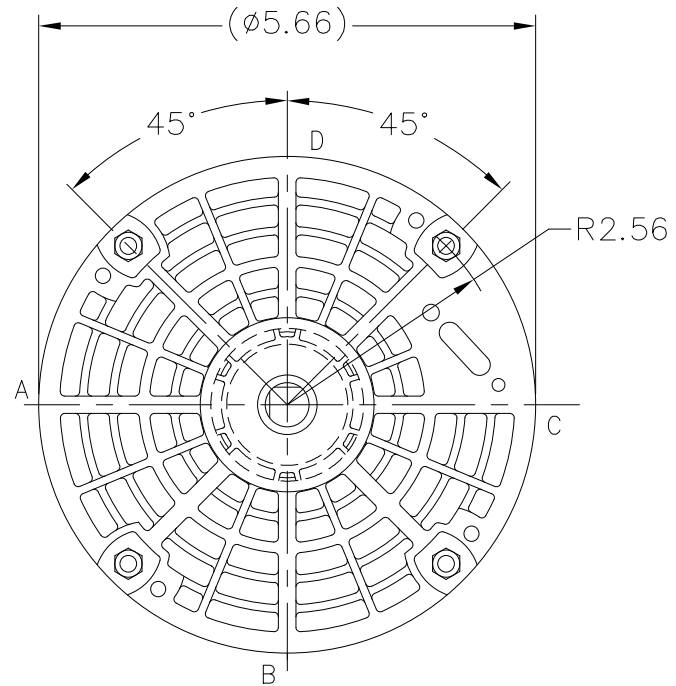
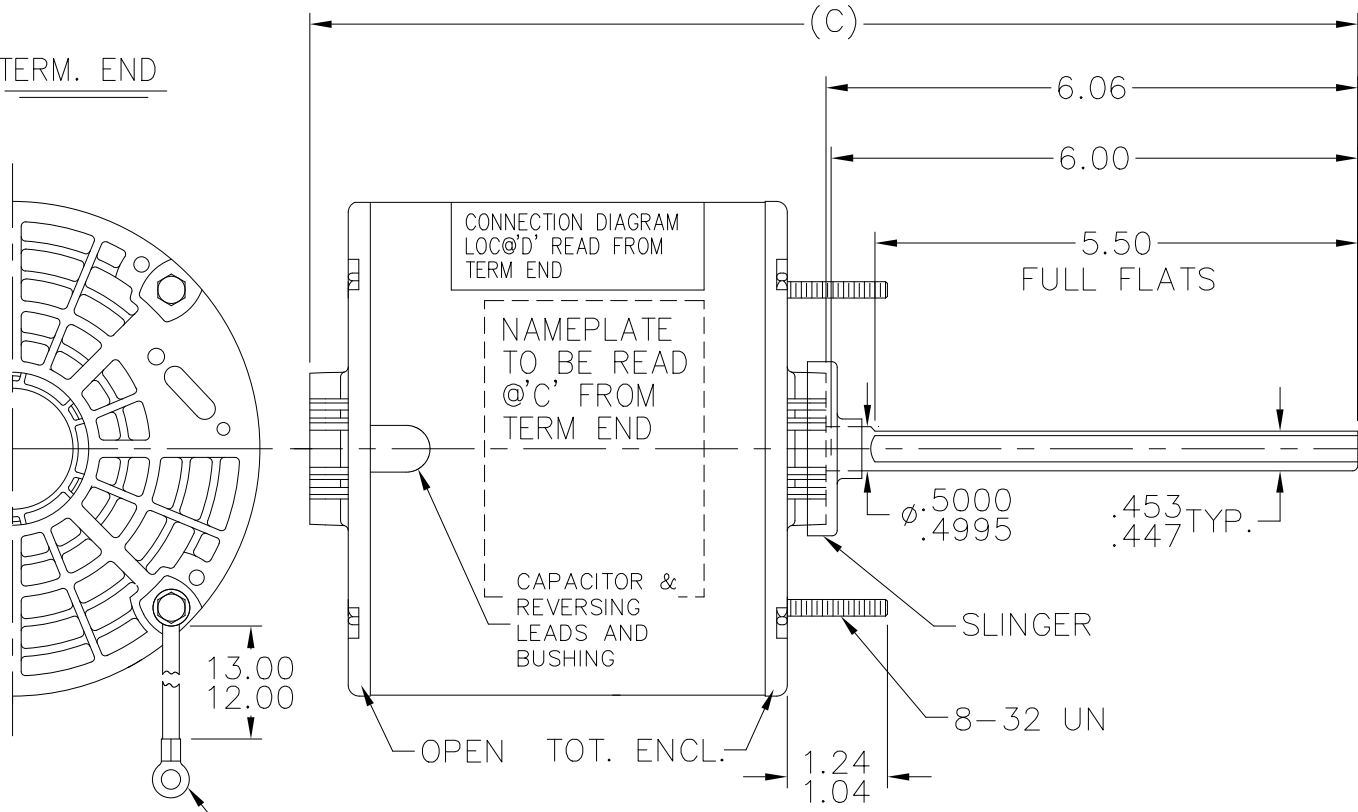
Nameplate Specifications

| | | | |
|------------------------|----------------|----------------------------|---------------|
| Phase | 1 | Output HP | 0.50 Hp |
| Output KW | 0.37 kW | Voltage | 460 V |
| Speed | 1625 rpm | Service Factor | 1.0 |
| Frame | 48Y | Enclosure | Open Air Over |
| Thermal Protection | Automatic | Efficiency | 64 % |
| Ambient Temperature | 40 °C | Frequency | 60 Hz |
| Current | 1.7 A | Power Factor | 81.5 |
| Duty | Continuous | Insulation Class | B |
| Design Code | NO DESIGN CODE | KVA Code | D |
| Drive End Bearing Size | 6203 | Opp Drive End Bearing Size | 6203 |
| UL | Recognized | CSA | Y |
| CE | N | IP Code | 10 |
| Number of Speeds | 1 | | |

Technical Specifications

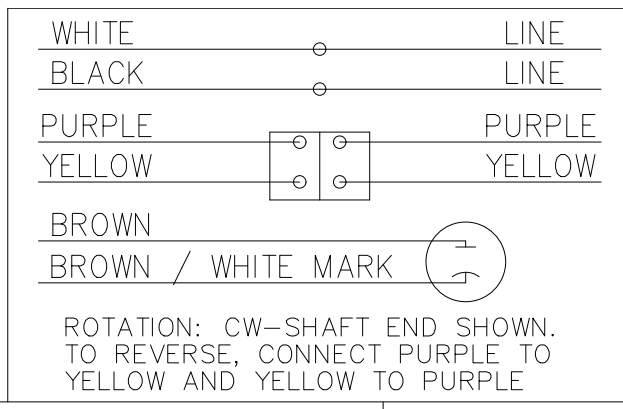
| | | | |
|-----------------------|---------------------------|-----------------------|----------------------------|
| Electrical Type | Permanent Split Capacitor | Starting Method | Across The Line |
| Poles | 4 | Rotation | Selective Counterclockwise |
| Mounting | Round - Extended Studs | Motor Orientation | Horizontal |
| Drive End Bearing | Ball | Opp Drive End Bearing | Ball |
| Frame Material | Rolled Steel | Shaft Type | Single Special Extension |
| Overall Length | 11.94 in | Frame Length | 4.50 in |
| Shaft Diameter | 0.500 in | Shaft Extension | 6.06 in |
| Assembly/Box Mounting | F1 ONLY | | |
| Outline Drawing | A-SS73949-450 | Connection Drawing | 6906496 |

TERM. END



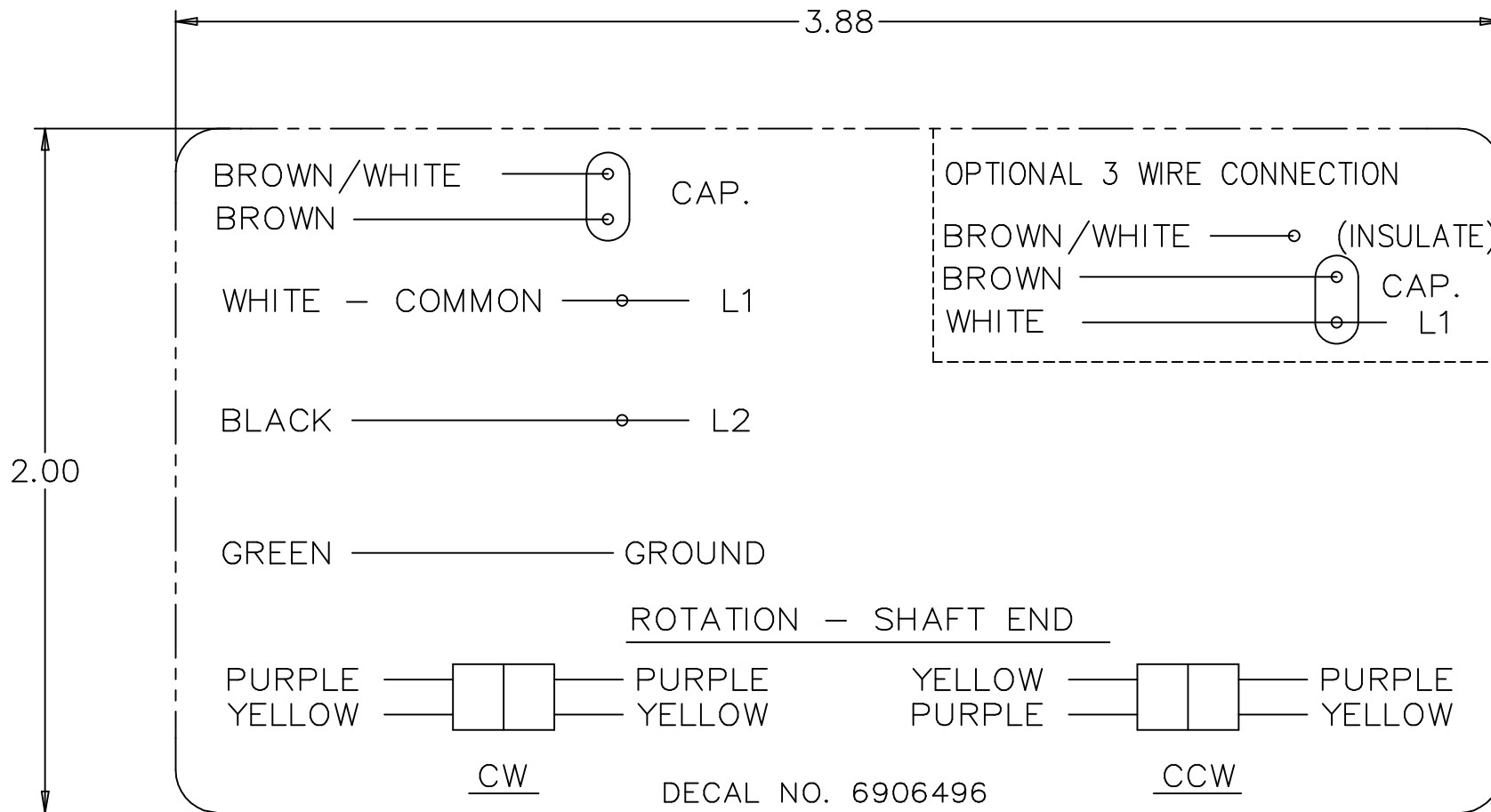
13.00
12.00
1 GREEN GRD.
W/TERM FOR
#10 SCREW

LEAD DESCRIPTION:
1 WHITE & 1 BLACK WITH .50 BARE WIRE STRIP 30.00" LONG.
2 BROWN CAPACITOR LEADS W/.25 FLAG TYPE QUICK CONNECTS 30.00" LONG
BROWN W/WHITE MARK IS COMMON TO WHITE LEAD
REVERSING LEADS ARE MOLDED INTO MATING PULL APART PLUGS. ONE PURPLE AND ONE YELLOW PER PLUG. 5.0 LONG



| DASH | FRAME | C |
|------|-------|-------|
| 350 | 48Y | 10.94 |
| 400 | 48Y | 11.44 |
| 450 | 48Y | 11.94 |
| 500 | 48Y | 12.44 |
| 525 | 48Y | 12.69 |

| NO. | REVISION | BY & DATE | CHK | TOLERANCES UNLESS SPECIFIED | | FINISH | DRAWN MRB 09-13-1995 | | | |
|--|--|----------------|-----|-----------------------------|------------------|--|----------------------|---------------------|-----------|--------|
| | | | | DEC. | INCHES | | | | | |
| 6 | CHG FROM MARATHON TO RRX TEMPLATE PER ECR-0233452 | MD 4/30/24 | DS | DEC. | INCHES | Regal Rexnord Regal Beloit America, Inc. | CHK DA 09-14-1995 | | | |
| 5 | UPDATED DRAWING | TJW 04/02/2007 | | .X | ±.1 | | APPD GK 09-14-1995 | | | |
| 4 | REDRAWN IN AUTOCAD | TAT 07-22-2004 | ML | .XX | ±.03 | TITLE OUTLINE | SCALE 7=16 | | | |
| 3 | REMOVED CONDUIT BOX, LEADS WERE 36.00-39.00 LONG. - REDRAWN ON CADD CN 21154 | MRB 09-14-1995 | | .XXX | ±.005 | 48Y FR. | REF | | | |
| | | | | .XXXX | ±.0005 | MAT'L. | FMF | | | |
| | | | | ANG | ±7'30" | | PREV | | | |
| THIS DRAWING IN DESIGN AND DETAIL IS OUR PROPERTY AND MUST NOT BE USED EXCEPT IN CONNECTION WITH OUR WORK ALL RIGHTS OF DESIGN AND INVENTION ARE RESERVED THIS IS AN ELECTRONICALLY GENERATED DOCUMENT - DO NOT SCALE THIS PRINT | | | | RFP | CAD FILE ss73949 | | SIZE A | DRAWING NO. SS73949 | PAGE OF 6 | REV. 6 |
| | | | | DIST WP | | | 3 of 6 | | | |



| NO. | REVISION | BY & DATE | CHK | TOLERANCES UNLESS SPECIFIED | | FINISH | DRAWN MRB 04-16-1998 | | |
|-----|---|----------------|-----|-----------------------------|--------|--|------------------------|--------------------|--------|
| | | | | DEC. | INCHES | | | | |
| 4 | ADDED DIM. TO DECAL | RDH 09/22/2003 | ML | .X | ±.1 | REGAL-BELOIT <i>Motor Technologies</i> | CHK ML 04-22-1998 | | |
| 3 | REMOVED 'MARATHON ELECTRIC' CN 35106 | DRS 05-01-2002 | TOM | .XX | ±.02 | | TITLE CONNECTION DECAL | APPD GK 04-22-1998 | |
| 2 | PART NAME WAS CONNECTION DIAGRAM CN 25669 | MRB 04-23-1998 | | .XXX | ±.005 | | | SCALE 1=1 | |
| 1 | NEW DRAWING CN 25669 | MRB 04-22-1998 | | .XXXX | ±.0005 | | MAT'L. | REF | |
| | | | | ANG | ±7'30" | | FMF | | |
| | | | | RFP | | CAD FILE 6906496 | PREV | | |
| | | | | DIST | WP | SIZE A | DRAWING NO. 6906496 | PAGE OF 4 | REV. 4 |

